

ACOUSTICAL PANELS



FEATURES

- Colorful, acoustically transparent fabric
- N.R.C.* .75 per ASTM 423 *Noise Reduction Coefficient
- Stock size 24" x 48" x 1 1/4" and custom sized panels up to 48" x 96" available
- 3 pcf (lbs per cubic foot) density Fibreglas® insulation, MDF backer board, and aluminum frame

APPLICATIONS

- School gymnasiums/
multi-purpose rooms
- Music rooms
- Auditoriums
- Home theaters
- Large halls



from
Panelfold®

The EchoSorb® Solution

WHY SHOULD YOU USE ECHOSORB® ACOUSTICAL PANELS?

In rooms with hard walls, floors and windows, do you feel like you are in an echo chamber? After spending large amounts on state-of-the-art equipment to get great audio performance, are you disappointed with the results? EchoSorb® acoustical panels will modify the affect that these hard surfaces have on the sound in your room by absorbing the echos.

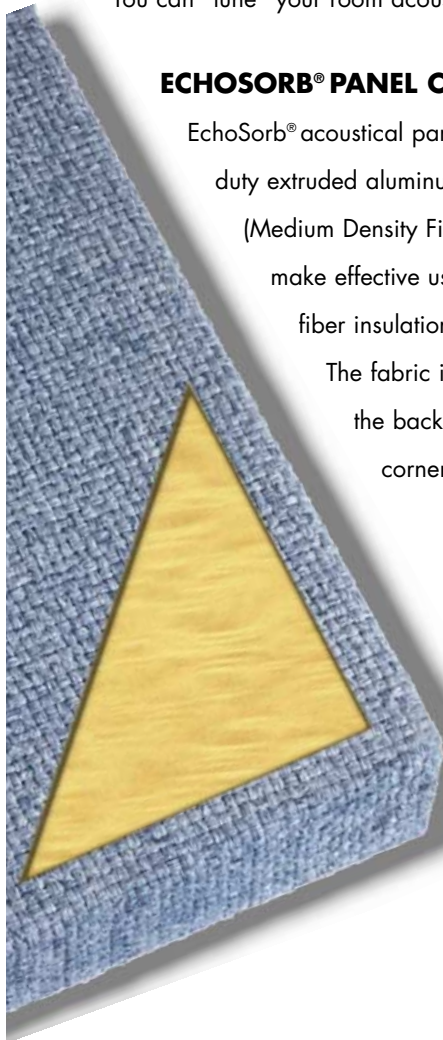
You can "tune" your room acoustically to your needs.



ECHOSORB® PANEL CONSTRUCTION.

EchoSorb® acoustical panels are framed in heavy duty extruded aluminum and backed with MDF (Medium Density Fiberboard). The panels make effective use of the acoustical glass fiber insulation behind the panel fabric.

The fabric is wrapped and stapled to the back of the panel with tailored corners.



Features

COLORS, TEXTURES, AND SIZES.

EchoSorb® acoustical panels are beautiful. While four (4) colors of Class A Flame Spread rated, acoustically transparent, panel fabric (shown below) are standard, special patterns and colors may be ordered. (See page 3.) The clean, straight lines of the panels can be used to blend into the surrounding wall treatment or can add contrast and relief to the walls on which they are placed. The popular 24" (610mm) by 48" (1220mm) by 1-1/4" (32mm) standard panels can be placed in many configurations and the designs they can make are virtually limitless. Custom sizes can be manufactured to order.

Acoustical Performance

EchoSorb® noise absorbing panels provide control of the echo effect. They are designed to deaden sound "bounce" within the room.

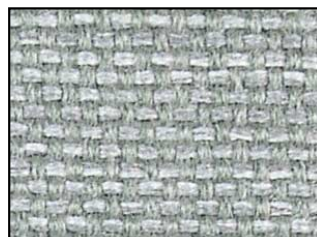
NOISE REDUCTION COEFFICIENTS ASTM E423-90-a AND E795-93* ECHOSORB® PANEL TESTED FOR REVERBERATION ROOM METHOD									
Density	Thickness	Cover	125HZ	250HZ	500HZ	1000HZ	2000HZ	4000HZ	NRC
3PCF	1"	100%	0.13	0.29	0.74	.88	1.00	0.93	.75
Polyolefin									

*RIVERBANK ACOUSTICAL LABORATORIES TEST RAL™ A99-158 AVAILABLE UPON REQUEST

Standard Colors



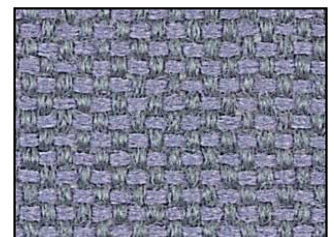
FRENCH VANILLA



JADE GREY



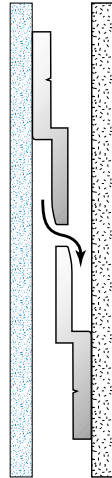
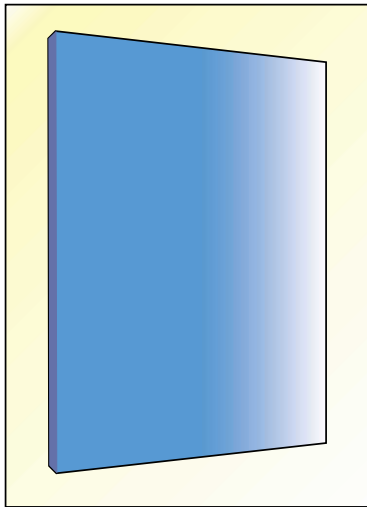
PETAL PINK



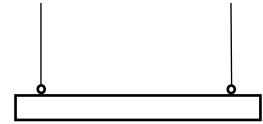
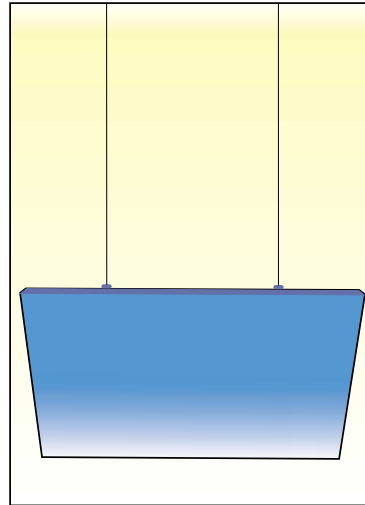
WILTON BLUE

TYPICAL EchoSorb® INSTALLATIONS

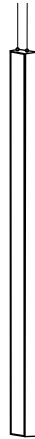
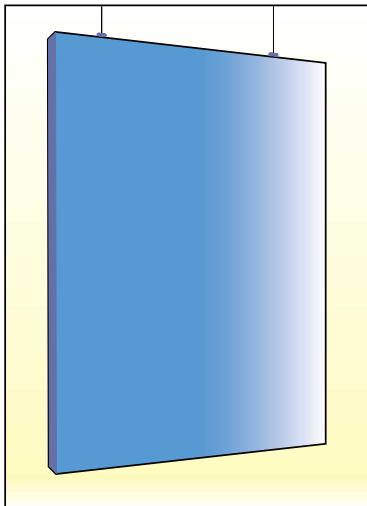
Wall Mounted Panels



Ceiling Panels



Vertically Suspended Panels



Echosorb® acoustical panels may be wall mounted with aluminum "Z" brackets. The panels easily lock right in place and may be quickly removed or relocated.

Use the panels horizontally suspended from the roof structure as floating ceiling baffles.

Panels may be vertically suspended from roof/ceiling structure to provide overhead baffles.

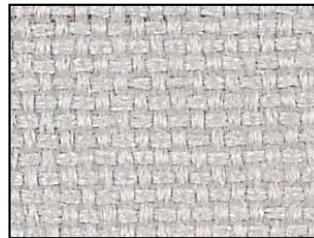
SPECIAL ORDER COLORS



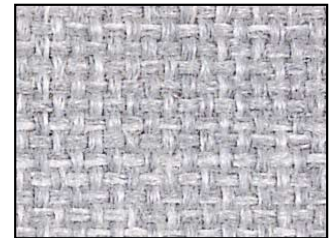
CLAM SHELL



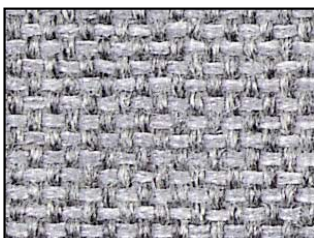
SANDSTONE



SILVER SHORES



SILVERY MOONLIGHT



ABSTRACT GREY



GREEN BLUE SLATE

EchoSorb® Acoustical Panels

Product Specifications

PART 1 General

(See Project Guide Specifications for Scope, Related work, References, Submittals, Product Delivery and Acceptable Manufacturers paragraphs.)

PART 2 PRODUCTS

2.01 ACOUSTICAL PANELS shall be EchoSorb® as manufactured by Panelfold, Inc., Miami, Florida, U.S.A. and installed by an authorized representative of manufacturer on walls or from over head support prepared by others to EchoSorb® requirements.

2.2 PANEL SIZES: All standard acoustical panels shall be 24"(610mm) wide by 48"(1220mm) long. Custom size panels shall be available from the manufacturer to specification in sizes up to 48"(1220mm) wide by 96" (2464mm) long.

2.3 PANEL CONSTRUCTION: Panels shall

be framed in heavy duty, extruded aluminum and backed with MDF (Medium Density Fiberboard). Panels shall be filled with 1"(25mm) thick Owens Corning 3 pcf (lbs per cubic foot) (.5kg/pcmgk per cubic meter) density Fibreglas® unfaced insulation, and wrapped with acoustically transparent panel fabric. The panel fabric shall be returned at the panel edges and stapled to the back of the panels with tailored corners. Panels shall be 1 1/4"(32mm) thick overall.

2.4 PANEL FABRIC: Acoustically transparent 100% polyolefin panel fabric shall be Class A flame spread rated. Colors shall be selected from manufacturer's standards or as specified:_____.

2.5 N.R.C ACOUSTICAL RATING: EchoSorb® acoustical panels shall have been tested by an independent, accredited acoustical laboratory and achieved

a minimum N.R.C. .75 in accordance with ASTM E423-90-a and E795-93.

2.6 HARDWARE: All mounting hardware suitable for applying the panels to the wall or to each other for suspended baffles shall be supplied by the manufacturer. There shall be no exposed fasteners or trim.

2.7 HANGING WEIGHT: Approximately 1.8 lb/ft² (8.8 kg/m²).

PART 3 EXECUTION

(See project Guide Specifications for Execution, Installation, Cleaning and Demonstration paragraphs.)

Note: ASTM84 procedure Class A flame spread and other test results referenced herein are for comparison purposes only and are not intended to reflect hazards presented by this or any other, materials under actual fire conditions.

The Panelfold® Line of Quality Products:

Panelfold also manufactures a broad line of folding doors, acoustical accordion folding partitions, operable partitions and relocatable walls. Please refer to Sweet's 08350/PAO and 10650/PAN. Write, Fax or E-mail for our Architectural Products Catalog, and Electronic Library on CD-ROM, or visit our website:www.panelfold.com



Scale® Folding Doors



Sonicwal® Accordion Partition



Modulflex® Operable Walls

Panelfold®

P.O.Box 680130, Miami, Florida 33168

305/688-3501 Fax: 305/688-0185 E-mail: sales@panelfold.com

Panelfold products are manufactured and sold under Panelfold®, Modulflex®, Sonicwal®, Fabricwal®, Closetwal®, Scale®, Europa®, Accent®, EchoSorb®, Echotex™, Criterion®, Plasticdor™, Conedor®, Carvedor®, Glazedor®, Mirrordor™, Startex™, Fabrictex®, Ropetex®, Woodtex®, Softex™, Ribtex®, Woventex®, Sheer Look™, PrimeSpacer™, Signature™ Series, Firecoustic®, Acoustiflame®, Action Track®, Memory Action®, Memory Action Hinge Design®, Panelok™, Trakkok™, Touch-bar™, Gripull™, Draw-tite™, Ceilingguard™, Ceilingshield™, Trakseal™, Sonicsweep™, Autoseal™, and Mouseal™ trademarks; U.S. Patent Nos. 4454690, and 4867221. Canadian Patent Nos. 1139155, 1148410, and 1260974. Other U.S. patents pending. Other foreign patents issued and pending. Panelfold is constantly developing its products and reserves the right to change specifications or materials without notice.

Form No. SA 980 AD. Printed in U.S.A. SEE US IN

