

# EchoSorb®

## ACOUSTICAL PANELS

### FEATURES

- Colorful, acoustically transparent panel fabric
- N.R.C.\* .75 per ASTM 423 \*Noise Reduction Coefficient
- Standard size 24" x 24" and 48" x 1 1/4", and custom sized panels up to 48" x 96" available
- 3 pcf (lbs per cubic foot) density Fiberglas® insulation, MDF backer board, and aluminum frame



### APPLICATIONS

- School gymnasiums/ multi-purpose rooms
- Music rooms
- Auditoriums
- Home theaters
- Large halls
- Restaurants
- Recording Studios



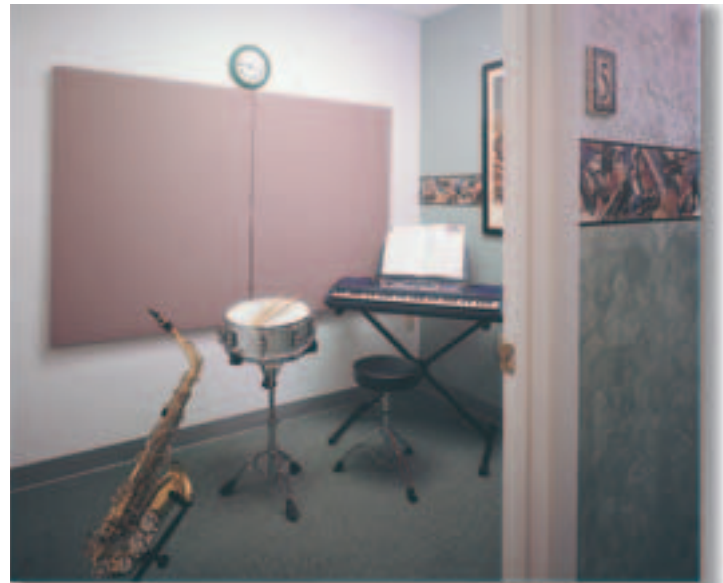
from  
**Panelfold®**

Manufacturers of Folding Doors, Folding Partitions, Operable and Relocatable Walls

# The EchoSorb® Solution

## WHY SHOULD YOU USE ECHOSORB® ACOUSTICAL PANELS?

In rooms with hard walls, floors and windows, do you feel like you are in an echo chamber? After spending large amounts on state-of-the-art equipment to get great audio performance, are you disappointed with the results? EchoSorb® acoustical panels will modify the affect that these hard surfaces have on the sound in your room by absorbing the echos. You can "tune" your room acoustically to your needs.

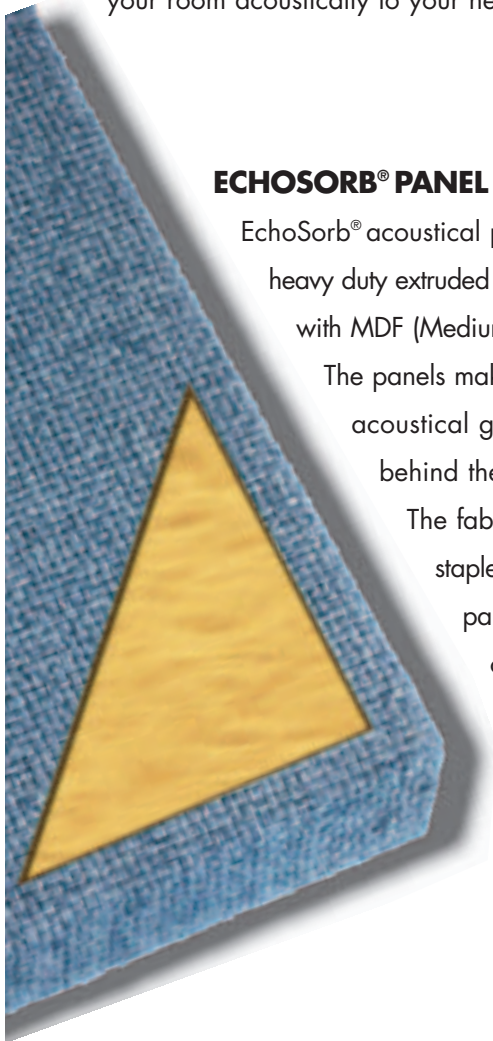


### ECHOSORB® PANEL CONSTRUCTION.

EchoSorb® acoustical panels are framed in heavy duty extruded aluminum and backed with MDF (Medium Density Fiberboard).

The panels make effective use of the acoustical glass fiber insulation behind the panel fabric.

The fabric is wrapped and stapled to the back of the panel with tailored corners.



## Features

### COLORS, TEXTURES, AND SIZES.

EchoSorb® acoustical panels are beautiful. While seven (7) colors of Class A Flame Spread rated, acoustically transparent, Echotex™ panel fabric (shown on page 3) are standard, special patterns and colors may be ordered. The clean, straight lines of the panels can be used to blend into the surrounding wall treatment or can add contrast and relief to the walls on which they are placed. The popular 24" (610mm) by 48" (1220mm) by 1 1/4" (32mm) standard panels can be placed in many configurations and the designs they can make are virtually limitless. Custom sizes can be manufactured to order.

## Acoustical Performance

EchoSorb® noise absorbing panels provide control of the echo effect. They are designed to deaden sound "bounce" within the room.

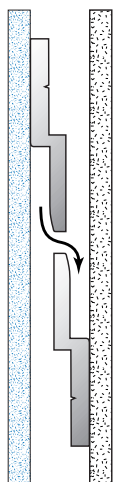
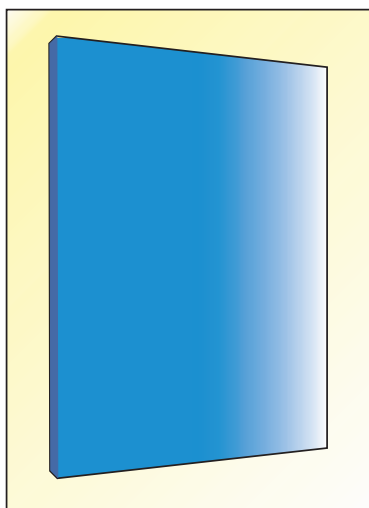
NOISE REDUCTION COEFFICIENTS ASTM E423-90-a AND E795-93* ECHOSORB® PANEL TESTED FOR REVERBORATION ROOM METHOD									
Density	Thickness	Cover	125HZ	250HZ	500HZ	1000HZ	2000HZ	4000HZ	NRC
3PCF	1"	100%	0.13	0.29	0.74	.88	1.00	0.93	.75
Polyolefin									

\*RIVERBANK ACOUSTICAL LABORATORIES TEST RAL™ A99-158 AVAILABLE UPON REQUEST

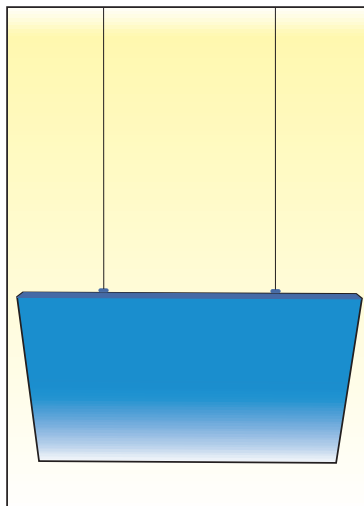
EchoSorb® from Panelfold

# TYPICAL EchoSorb® INSTALLATIONS

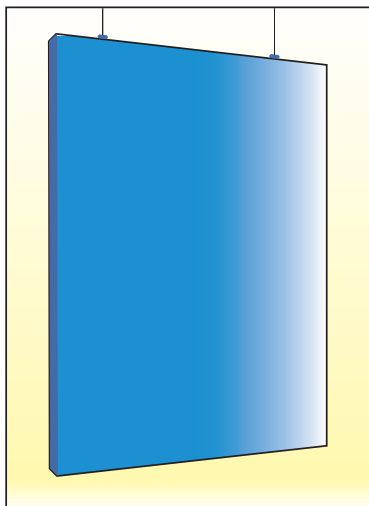
### Wall Mounted Panels



### Ceiling Panels



### Vertically Suspended Panels



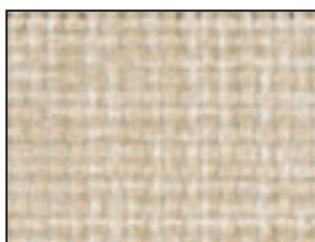
Echosorb® acoustical panels may be wall mounted with aluminum "Z" brackets, or industrial hook & loop fasteners. The panels easily lock right in place and may be quickly removed or relocated.

Use the panels horizontally suspended from the roof structure as floating ceiling baffles.

Panels may be vertically suspended from roof/ceiling structure to provide overhead baffles.

## ECHOTEX™ STANDARD COLORS

**EchoSorb®**  
from  
**Panelfold**  
Color Selectors are Available



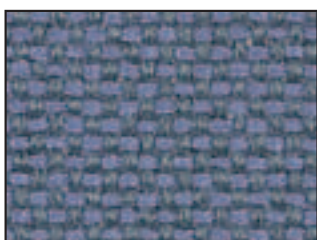
SANDSTONE



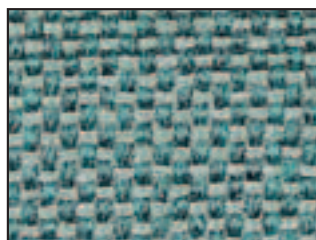
SILVER SHORES



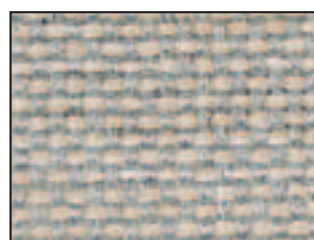
SILVERLY MOONLIGHT



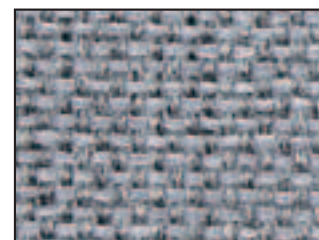
WILTON BLUE



GREEN BLUE SLATE



CLAM SHELL



ABSTRACT GREY

# EchoSorb® Acoustical Panels

## Product Specifications

### PART 1 General

(See Project Guide Specifications for Scope, Related work, References, Submittals, Product Delivery and Acceptable Manufacturers paragraphs.)

### PART 2 PRODUCTS

**2.01 ACOUSTICAL PANELS** shall be EchoSorb® as manufactured by Panelfold, Inc., Miami, Florida, U.S.A. and installed by an authorized representative of manufacturer on walls or from over head support prepared by others to EchoSorb® requirements.

**2.2 PANEL SIZES:** All standard acoustical panels shall be 24"(610mm) wide by 24"(610mm) or 48"(1220mm) long. Custom size panels shall be available from the manufacturer to specification in sizes up to 48"(1220mm) wide by 96"(2464mm) long.

**2.3 PANEL CONSTRUCTION:** Panels shall be framed in heavy duty, extruded aluminum and backed with MDF (Medium Density Fiberboard). Panels shall be filled with 1"(25mm) thick Owens Corning 3 lb/ft<sup>3</sup> (48 kg/m<sup>3</sup>) density Fiberglas® unfaced insulation, and wrapped with acoustically transparent panel fabric. The panel fabric shall be returned at the panel edges and stapled to the back of the panels with tailored corners. Panels shall be 1 1/4"(32mm) thick overall.

**2.4 PANEL FABRIC:** Acoustically transparent 100% polyolefin Echotex™ panel fabric shall be Class A flame spread rated. Colors shall be selected from manufacturer's standards or as specified: \_\_\_\_\_.

**2.5 N.R.C ACOUSTICAL RATING:** EchoSorb® acoustical panels shall have been tested by an independent, accredited acoustical laboratory and achieved a minimum N.R.C. .75 in

accordance with ASTM E423-90-a and E795-93.

**2.6 HARDWARE:** All mounting hardware suitable for applying the panels to the wall or to each other for suspended baffles shall be supplied by the manufacturer. There shall be no exposed fasteners or trim.

**2.7 HANGING WEIGHT:** Approximately 1.8 lb/ft<sup>2</sup> (8.8 kg/m<sup>2</sup>).

### PART 3 EXECUTION

(See project Guide Specifications for Execution, Installation, Cleaning and Demonstration paragraphs.)

Note: ASTM84 procedure Class A flame spread and other test results referenced herein are for comparison purposes only and are not intended to reflect hazards presented by this or any other, materials under actual fire conditions.

## The Panelfold® Line of Quality Products:

Panelfold® also manufactures a broad line of folding doors, acoustical accordion folding partitions, operable partitions and relocatable walls. Please refer to Sweet's 08350/PAO and 10650/PAN. Write, Fax or E-mail for our Architectural Products Catalog, and the Panelfold® interactive CD-ROM, or visit our website: [www.panelfold.com](http://www.panelfold.com)



Scale® Folding Doors



Sonicwal® Accordion Partition



Modulflex® Operable Walls

# Panelfold®

Panelfold products are manufactured and sold under Panelfold®, Modulflex®, Sonicwal®, Fabricwal®, Closetwal®, Scale®, Europa®, Accent®, EchoSorb®, Echotex™, Criterion®, Plasticdor®, Canedor®, Carvedor®, Glazedor®, Mirrordor®, Startex™, Fabrictex®, Ropetex®, Woodtex®, Softex™, Ribtex®, Woventex®, Sheer Look®, PrimeSpace®, Signature® Series, Firecoustic®, Acoustiflame®, Action Track®, Memory Action®, Memory Action Hinge Design®, Panelok®, Traklok®, Touch-bar®, Gripull™, Draw-tite™, Ceilingguard™, Safetyflex™, Trakseal™, Sonicsweep™, Autosetal™, and Manuseal™ trademarks; U.S. Patent Nos. 4454690, and 4867221. Canadian Patent Nos. 1139155, 1148410, and 1260974. Other U.S. patents pending. Other foreign patents issued and pending. Panelfold is constantly developing its products and reserves the right to change specifications or materials without notice.

**P.O.Box 680130, Miami, Florida 33168**

**305/688-3501 Fax: 305/688-0185 E-mail: [sales@panelfold.com](mailto:sales@panelfold.com)**

Form No. SA 980 AD. Printed in U.S.A. SEE US IN      